



LEGEND

Map 11A  
Newport  
Center  
Village

1: 4,272

May 31, 2015



NOTES

Map created using ANR's Natural Resources Atlas

217.0 0 108.00 217.0 Meters

WGS\_1984\_Web\_Mercator\_Auxiliary\_Sphere

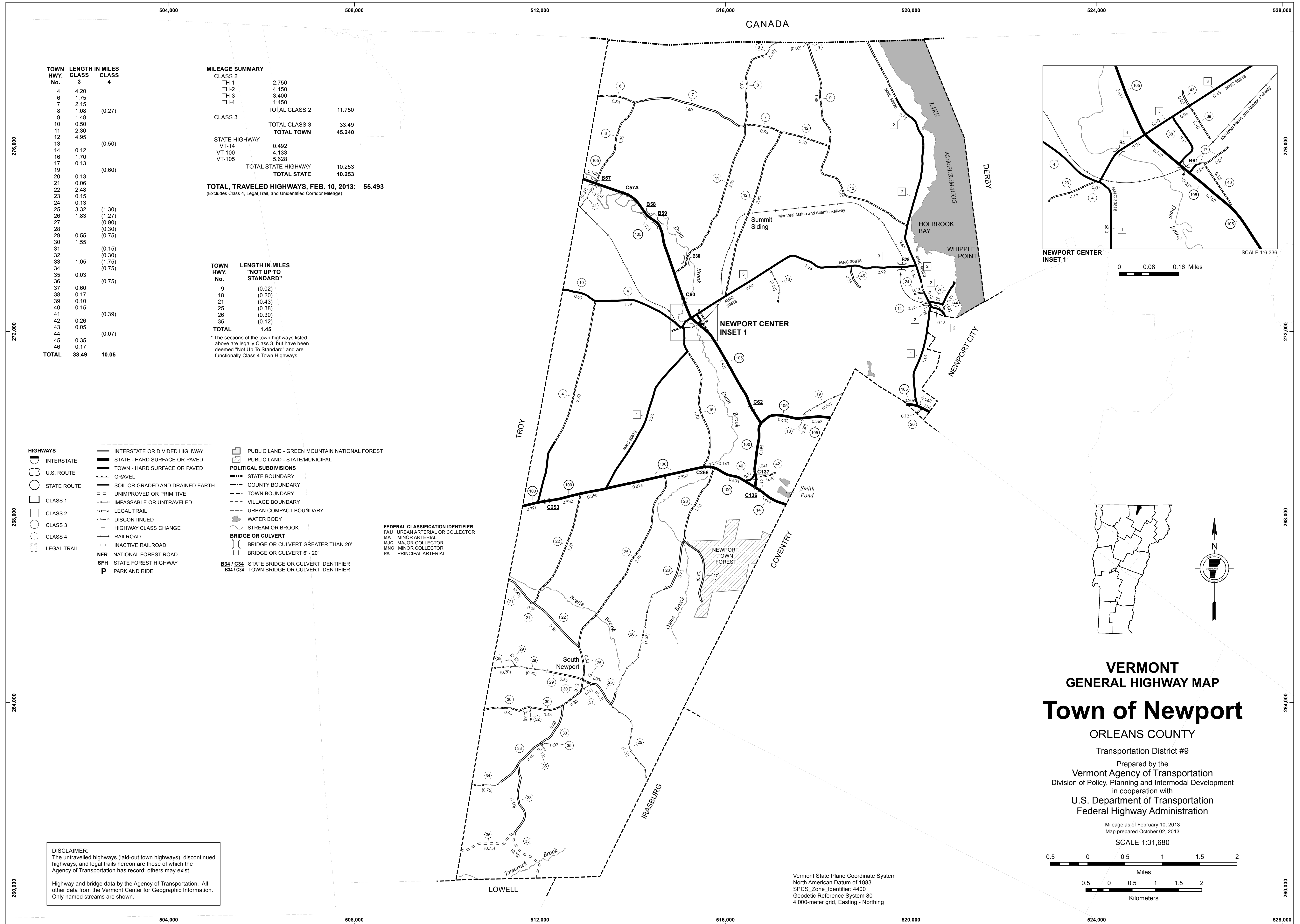
1" = 356 Ft. 1cm = 43 Meters

© Vermont Agency of Natural Resources

THIS MAP IS NOT TO BE USED FOR NAVIGATION

DISCLAIMER: This map is for general reference only. Data layers that appear on this map may or may not be accurate, current, or otherwise reliable. ANR and the State of Vermont make no representations of any kind, including but not limited to, the warranties of merchantability, or fitness for a particular use, nor are any such warranties to be implied with respect to the data on this map.





TOWN HWY. No.	LENGTH IN MILES CLASS 3	CLASS 4
4	4.20	
6	1.75	
7	2.15	
8	1.08	(0.27)
9	1.48	
10	0.50	
11	2.30	
12	4.95	
13		(0.50)
14	0.12	
16	1.70	
17	0.13	
19		(0.60)
20	0.13	
21	0.06	
22	2.48	
23	0.15	
24	0.13	
25	3.32	(1.30)
26	1.83	(1.27)
27		(0.90)
28		(0.30)
29	0.55	(0.75)
30	1.55	
31		(0.15)
32		(0.30)
33	1.05	(1.75)
34		(0.75)
35	0.03	
36		(0.75)
37	0.60	
38	0.17	
39	0.10	
40	0.15	
41		(0.39)
42	0.26	
43	0.05	
44		(0.07)
45	0.35	
46	0.17	
<b>TOTAL</b>	<b>33.49</b>	<b>10.05</b>

**MILEAGE SUMMARY**

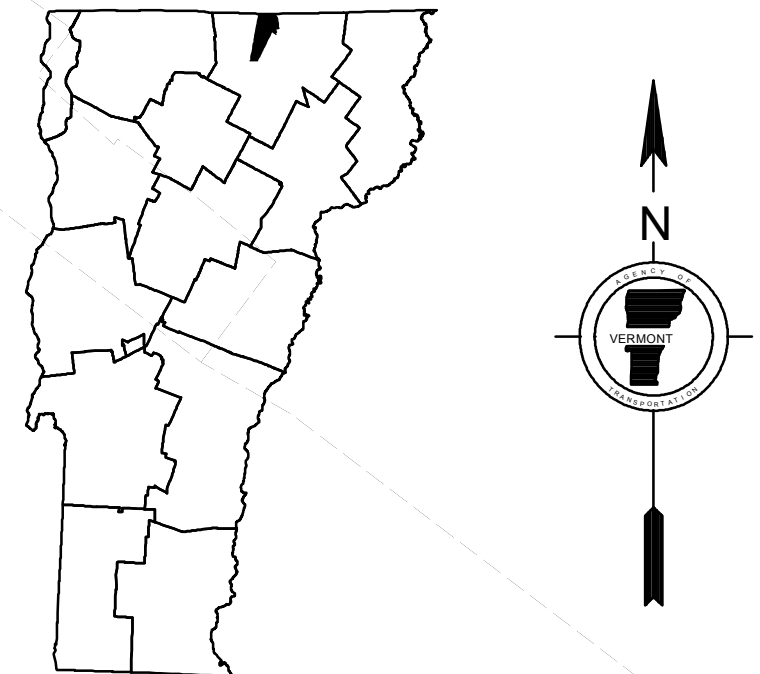
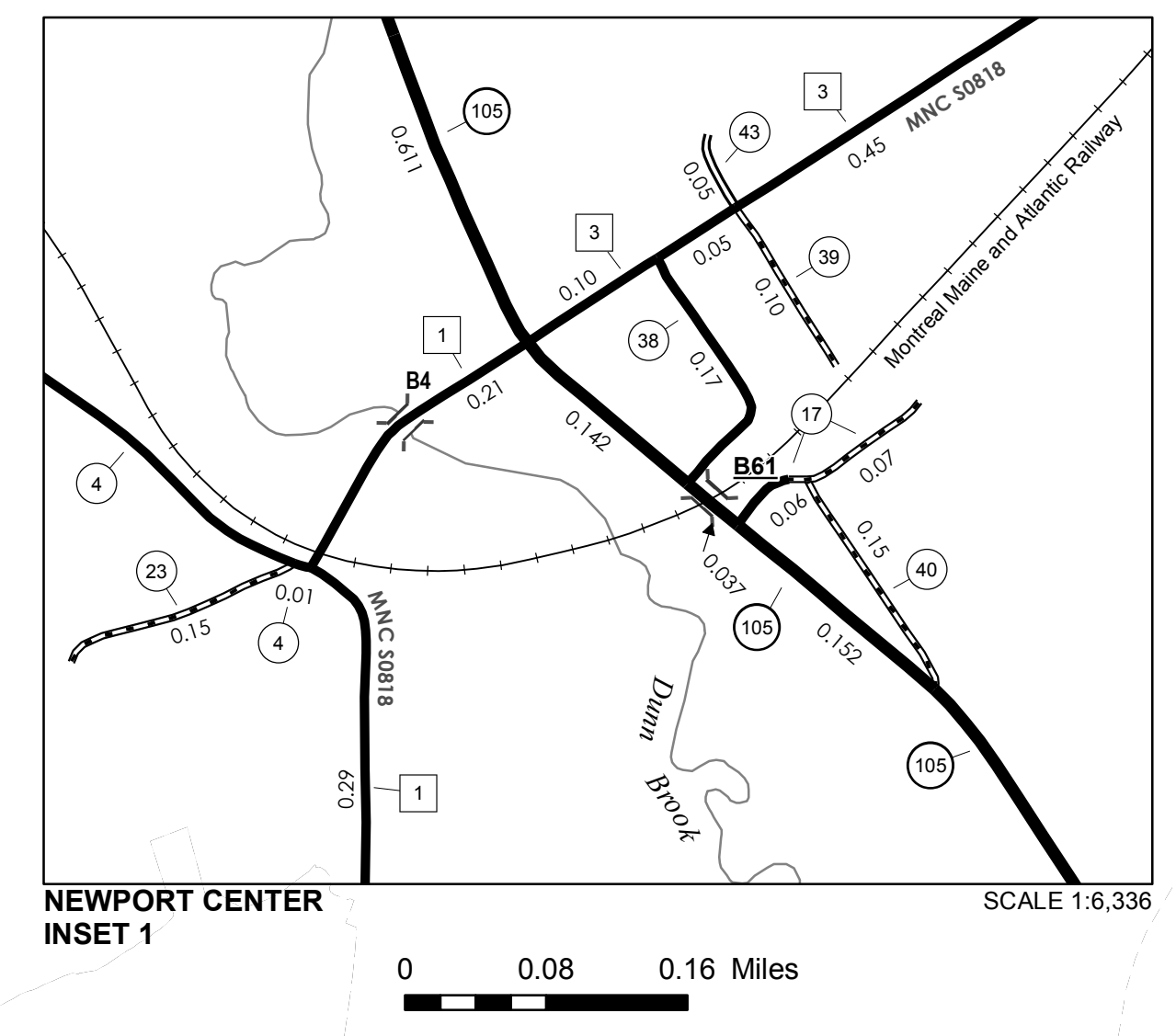
CLASS 2	2.750	
TH-1	4.150	
TH-2	3.400	
TH-3	1.450	
TH-4		
<b>TOTAL CLASS 2</b>	<b>11.750</b>	
CLASS 3		
<b>TOTAL CLASS 3</b>	<b>33.49</b>	
<b>TOTAL TOWN</b>	<b>45.240</b>	
STATE HIGHWAY		
VT-14	0.492	
VT-100	4.133	
VT-105	5.628	
<b>TOTAL STATE HIGHWAY</b>	<b>10.253</b>	
<b>TOTAL STATE</b>	<b>10.253</b>	

**TOTAL, TRAVELED HIGHWAYS, FEB. 10, 2013: 55.493**  
 (Excludes Class 4, Legal Trail, and Unidentified Corridor Mileage)

TOWN HWY. No.	LENGTH IN MILES "NOT UP TO STANDARD"
9	(0.02)
18	(0.20)
21	(0.43)
25	(0.30)
26	(0.30)
35	(0.12)
<b>TOTAL</b>	<b>1.45</b>

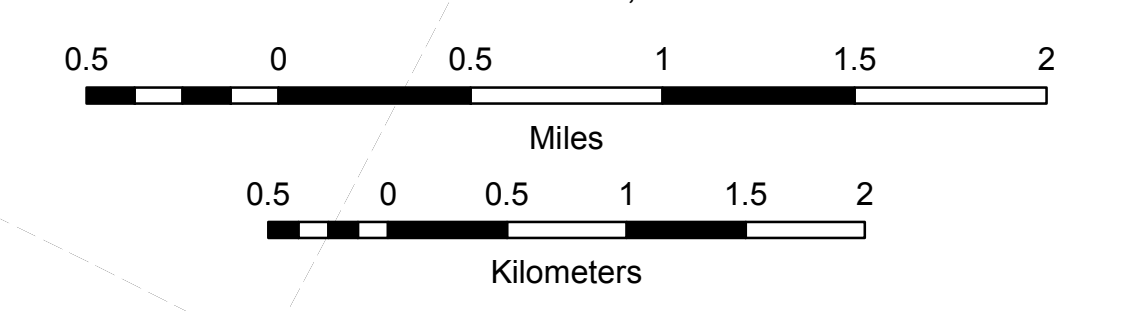
\* The sections of the town highways listed above are legally Class 3, but have been deemed "Not Up To Standard" and are functionally Class 4 Town Highways

- HIGHWAYS**
- INTERSTATE OR DIVIDED HIGHWAY
  - STATE - HARD SURFACE OR PAVED
  - TOWN - HARD SURFACE OR PAVED
  - GRAVEL
  - SOIL OR GRADED AND DRAINED EARTH
  - UNIMPROVED OR PRIMITIVE
  - IMPASSABLE OR UNTRAVELED
  - LEGAL TRAIL
  - DISCONTINUED
  - HIGHWAY CLASS CHANGE
  - RAILROAD
  - INACTIVE RAILROAD
  - NATIONAL FOREST ROAD
  - STATE FOREST HIGHWAY
  - PARK AND RIDE
- POLITICAL SUBDIVISIONS**
- STATE BOUNDARY
  - COUNTY BOUNDARY
  - TOWN BOUNDARY
  - VILLAGE BOUNDARY
  - URBAN COMPACT BOUNDARY
  - WATER BODY
  - STREAM OR BROOK
- BRIDGE OR CULVERT**
- BRIDGE OR CULVERT GREATER THAN 20'
  - BRIDGE OR CULVERT 6' - 20'
- FEDERAL CLASSIFICATION IDENTIFIER**
- FAU - URBAN ARTERIAL OR COLLECTOR
  - MA - MINOR ARTERIAL
  - MJC - MAJOR COLLECTOR
  - MNC - MINOR COLLECTOR
  - PA - PRINCIPAL ARTERIAL
- B34 / C34** STATE BRIDGE OR CULVERT IDENTIFIER  
**B34 / C34** TOWN BRIDGE OR CULVERT IDENTIFIER



**VERMONT**  
**GENERAL HIGHWAY MAP**  
**Town of Newport**  
 ORLEANS COUNTY

Transportation District #9  
 Prepared by the  
 Vermont Agency of Transportation  
 Division of Policy, Planning and Intermodal Development  
 in cooperation with  
 U.S. Department of Transportation  
 Federal Highway Administration



**DISCLAIMER:**  
 The untraveled highways (laid-out town highways), discontinued highways, and legal trails hereon are those of which the Agency of Transportation has record; others may exist.  
 Highway and bridge data by the Agency of Transportation. All other data from the Vermont Center for Geographic Information. Only named streams are shown.

Vermont State Plane Coordinate System  
 North American Datum of 1983  
 SPCS\_Zone\_Identifier: 4400  
 Geodetic Reference System 80  
 4,000-meter grid, Easting - Northing





LEGEND

Map 11C  
Vance  
Hill Water  
Facility

1: 867

May 31, 2015



NOTES

Map created using ANR's Natural Resources Atlas

44.0 0 22.00 44.0 Meters

WGS\_1984\_Web\_Mercator\_Auxiliary\_Sphere

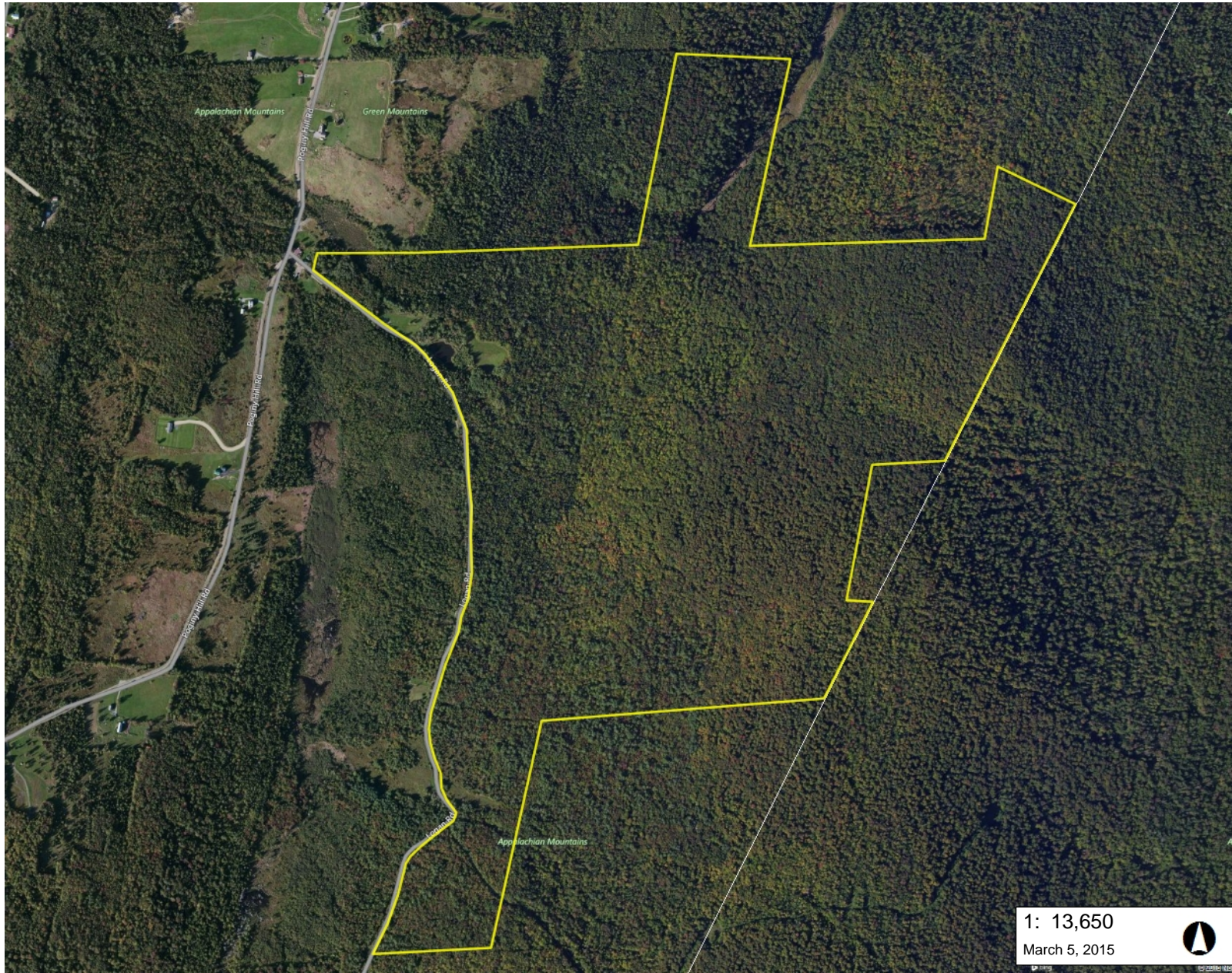
1" = 72 Ft. 1cm = 9 Meters

© Vermont Agency of Natural Resources

THIS MAP IS NOT TO BE USED FOR NAVIGATION

DISCLAIMER: This map is for general reference only. Data layers that appear on this map may or may not be accurate, current, or otherwise reliable. ANR and the State of Vermont make no representations of any kind, including but not limited to, the warranties of merchantability, or fitness for a particular use, nor are any such warranties to be implied with respect to the data on this map.






### LEGEND

Town Boundary

Map 11D  
Newport Town  
Recreational Land  
on Poginy Hill

1: 13,650  
March 5, 2015



### NOTES

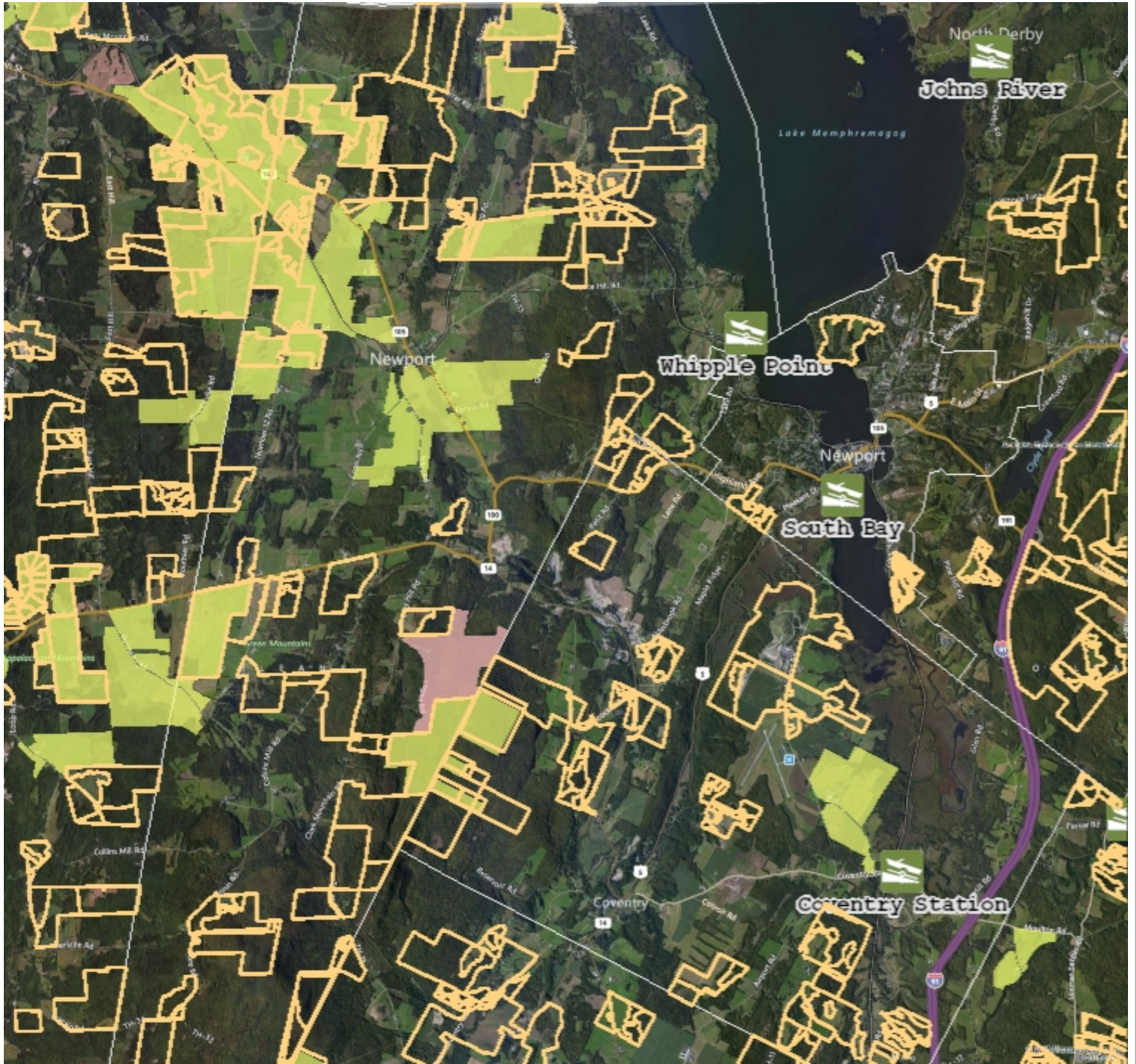
Map created using ANR's Natural Resources Atlas



WGS\_1984\_Web\_Mercator\_Auxiliary\_Sphere 1" = 1138 Ft. 1cm = 136 Meters  
© Vermont Agency of Natural Resources THIS MAP IS NOT TO BE USED FOR NAVIGATION

**DISCLAIMER:** This map is for general reference only. Data layers that appear on this map may or may not be accurate, current, or otherwise reliable. ANR and the State of Vermont make no representations of any kind, including but not limited to, the warranties of merchantability, or fitness for a particular use, nor are any such warranties to be implied with respect to the data on this map.





**LEGEND**

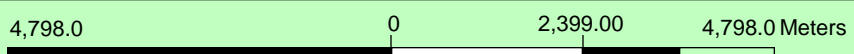
- Use Value Appraisal Parcels
- Conserved Lands**
  - Housing and Conservation Board
  - Local Government
  - Private Organization
  - US Dept. of Defense
  - US Fish and Wildlife Service
  - US National Park Service

**NOTES**

Map created using ANR GIS mapping technology.

**Map 11E**

1: 94,439  
June 19, 2015

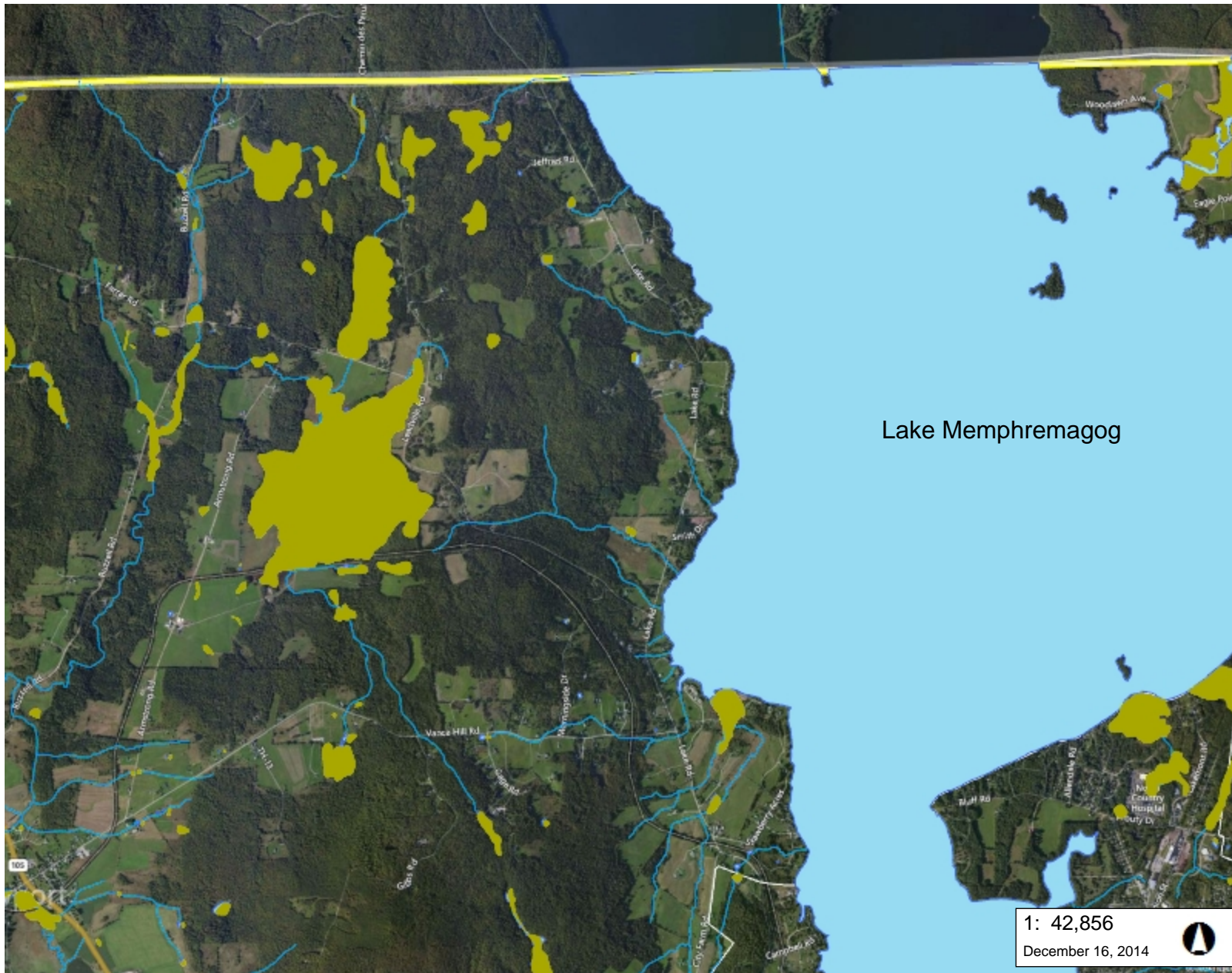


WGS\_1984\_Web\_Mercator\_Auxiliary\_Sphere  
© Vermont Agency of Natural Resources

1" = 7870 Ft. 1cm = 944 Meters  
THIS MAP IS NOT TO BE USED FOR NAVIGATION

**DISCLAIMER:** This map is for general reference only. Data layers that appear on this map may or may not be accurate, current, or otherwise reliable. ANR and the State of Vermont make no representations of any kind, including but not limited to, the warranties of merchantability, or fitness for a particular use, nor are any such warranties to be implied with respect to the data on this map.





**LEGEND**

- Wetlands - VSWI
  - Class 1 Wetland
  - Class 2 Wetland
- Wetlands Advisory Layer
- Waterbody
- Stream
- Town Boundary
- County Boundary

Map 11F  
Town of Newport  
Lakeshore Map

1: 42,856  
December 16, 2014



**NOTES**

Map created using ANR's Natural Resources Atlas

2,177.0 0 1,088.00 2,177.0 Meters

WGS\_1984\_Web\_Mercator\_Auxiliary\_Sphere 1" = 3571 Ft. 1cm = 429 Meters  
© Vermont Agency of Natural Resources THIS MAP IS NOT TO BE USED FOR NAVIGATION

DISCLAIMER: This map is for general reference only. Data layers that appear on this map may or may not be accurate, current, or otherwise reliable. ANR and the State of Vermont make no representations of any kind, including but not limited to, the warranties of merchantability, or fitness for a particular use, nor are any such warranties to be implied with respect to the data on this map.





### LEGEND

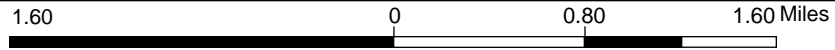
- Airports
- Roads - Major Roads**
  - Interstate Highway
  - US Highway
  - State Highway
  - Local Road
- Rail Lines
- Town Boundaries
- County Boundaries
- Airports
- US Highways
- State Highways
- Roads - Major Roads**
  - Interstate Highway
  - US Highway
  - State Highway
  - Local Road
- Rail Lines
- Town Boundaries
- Hospitals
- Public Libraries
- K-12 Schools
- Post Secondary Schools



### NOTES

This map was created with the VT Interactive Map Viewer.

Map 11G



WGS\_1984\_Web\_Mercator\_Auxiliary\_Sphere  
© Vermont Center For Geographic Information

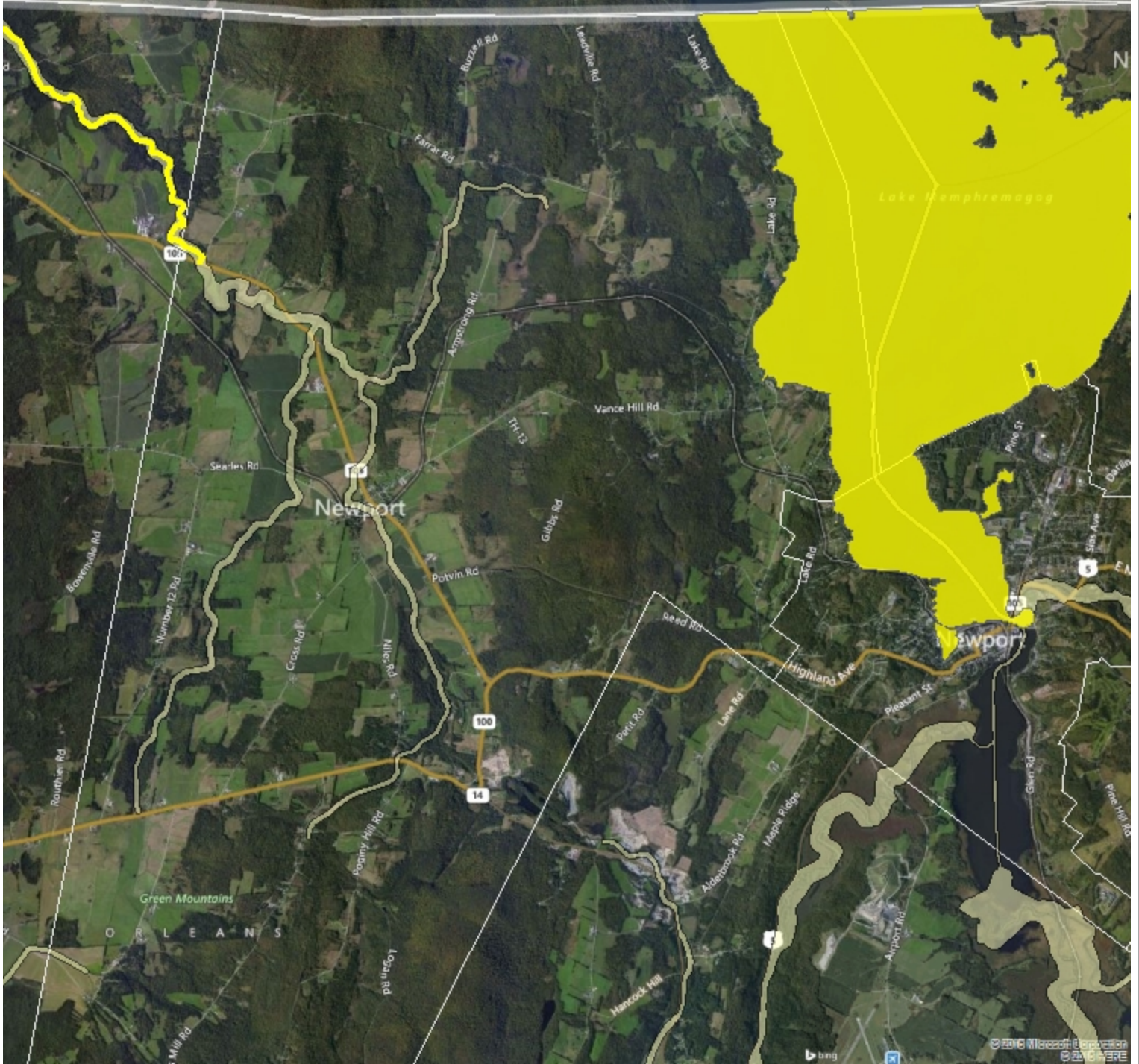
THIS MAP IS NOT TO BE USED FOR NAVIGATION

**DISCLAIMER:** This map is for general reference only. Data layers that appear on this map may or may not be accurate, current, or otherwise reliable. VCGI and the State of Vermont make no representations of any kind, including but not limited to, the warranties of merchantability, or fitness for a particular use, nor are any such warranties to be implied with respect to the data on this map.

1: 50,557  
June 17, 2015





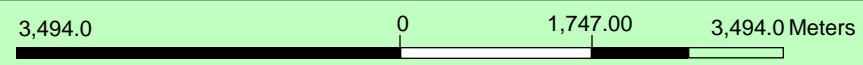


- LEGEND**
- 303(d) List of Impaired Lakes and Ponds
  - 303(d) List of Impaired Streams and Rivers
  - River Corridors (Jan 2, 2015)
  - Town Boundary

**NOTES**

Map created using ANR GIS mapping technology.

1: 68,776  
June 17, 2015



WGS\_1984\_Web\_Mercator\_Auxiliary\_Sphere  
© Vermont Agency of Natural Resources

1" = 5731 Ft.      1cm = 688 Meters  
**THIS MAP IS NOT TO BE USED FOR NAVIGATION**

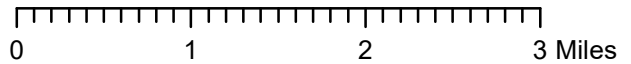
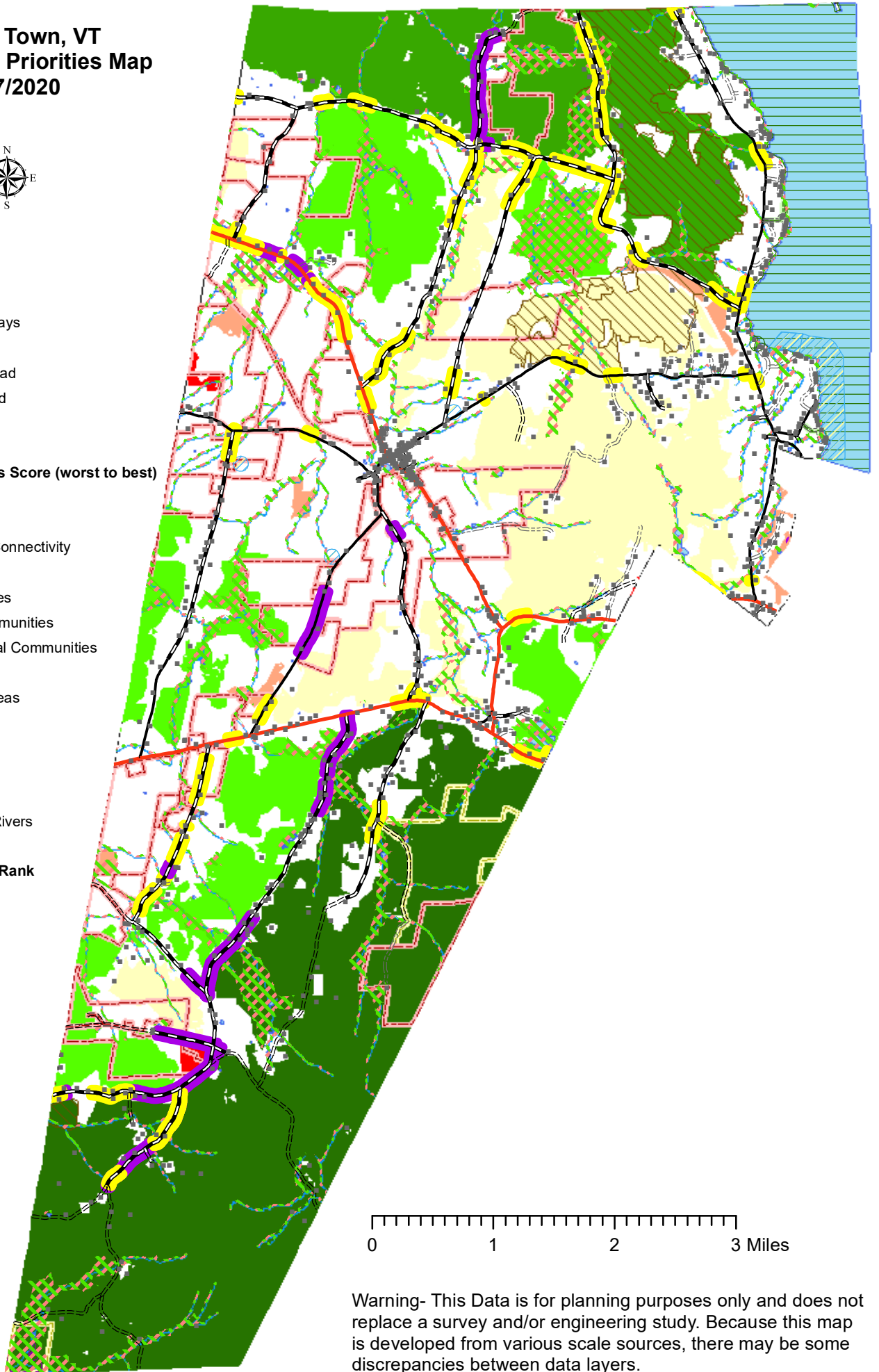
**DISCLAIMER:** This map is for general reference only. Data layers that appear on this map may or may not be accurate, current, or otherwise reliable. ANR and the State of Vermont make no representations of any kind, including but not limited to, the warranties of merchantability, or fitness for a particular use, nor are any such warranties to be implied with respect to the data on this map.



# Newport Town, VT Conservation Priorities Map 01/27/2020



- Building Locations
- US & State Highways
- Paved Town Road
- Unpaved Town Road
- ==== Class 4 Town Road
- - - - Legal Trail
- ==== Private Road
- Wildlife Road Crossings Score (worst to best)**
- 3
- 4
- ▨ Riparian Wildlife Connectivity
- ▨ Rare Species
- ▨ Uncommon Species
- ▨ Rare Natural Communities
- ▨ Uncommon Natural Communities
- ▨ Mast Stands
- ▨ Deer Wintering Areas
- Conserved Lands**
- ▨ State
- ▨ Town
- ▨ Private
- ▨ Lakes, Ponds, & Rivers
- ▨ Streams
- Habitat Blocks Priority Rank**
- 2
- 3
- 4
- 5
- 6
- 7



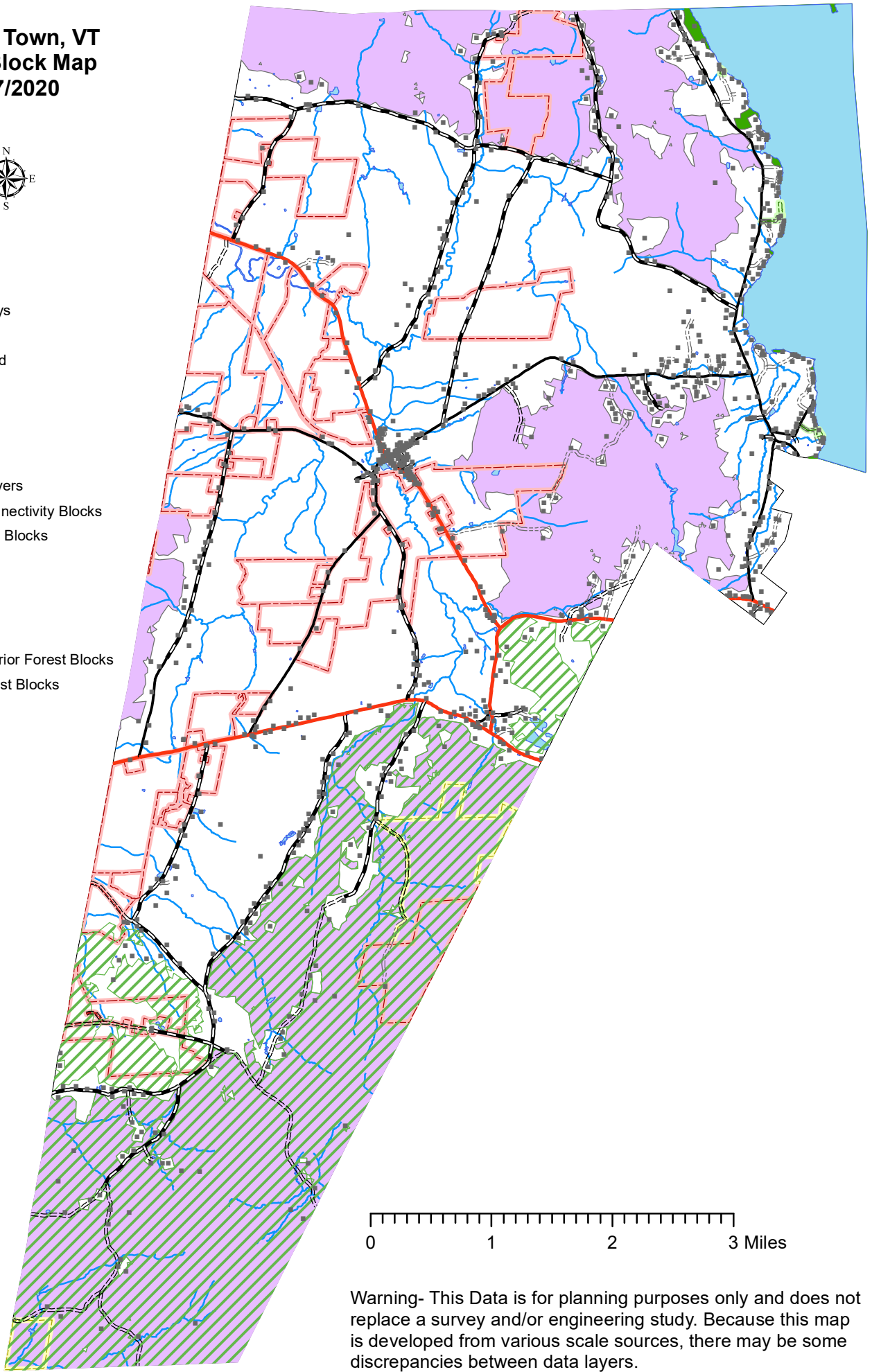
Warning- This Data is for planning purposes only and does not replace a survey and/or engineering study. Because this map is developed from various scale sources, there may be some discrepancies between data layers.



# Newport Town, VT Forest Block Map 01/27/2020



- Building Locations
- US & State Highways
- Paved Town Road
- Unpaved Town Road
- ==== Class 4 Town Road
- Legal Trail
- Private Road
- Streams
- Lakes, Ponds, & Rivers
- ▨ Highest Priority Connectivity Blocks
- ▨ Priority Connectivity Blocks
- Conserved Lands**
- State
- Town
- Private
- Highest Priority Interior Forest Blocks
- Priority Interior Forest Blocks



0 1 2 3 Miles

Warning- This Data is for planning purposes only and does not replace a survey and/or engineering study. Because this map is developed from various scale sources, there may be some discrepancies between data layers.